



QUALITY IS OUR FIRST PRIORITY

FL TRIPLE WIDE CERTIFIED 150 MPH

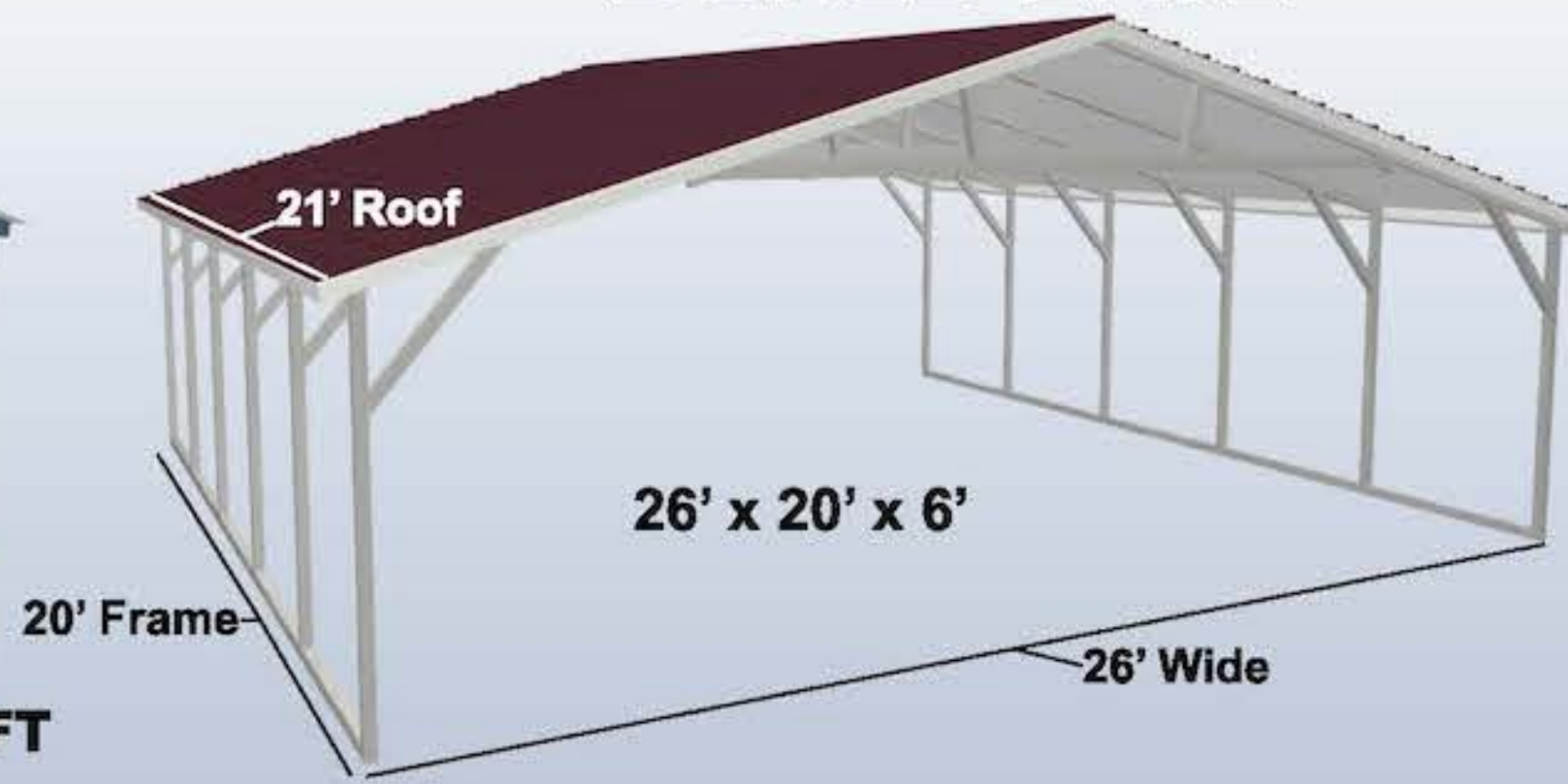
26' to 30' Wide - Up to 16' Height - Any Length

VERTICAL

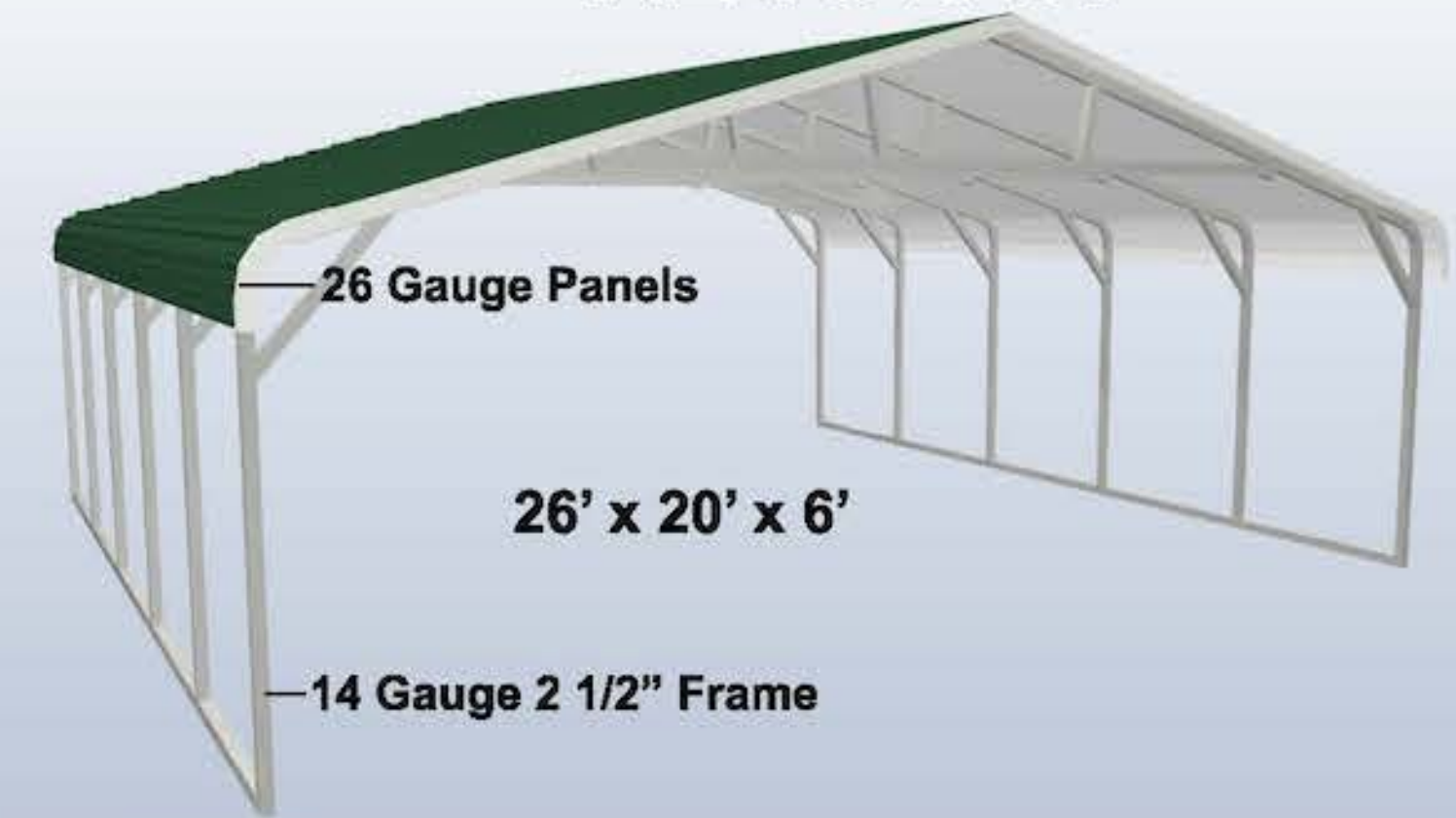


15'-16' HT REQUIRES
A TELESCOPIC FORKLIFT

BOXED EAVE



REGULAR



ALL BUILDINGS INCLUDE:

- 26 Gauge Roofing
- Braces on Every Leg
- Welded Center Truss
- Anchors Included
- 4' Centers or Less

Roof Length Is 1ft. Longer Than Frame Length

1 YEAR WORKMANSHIP WARRANTY (Limited)

10 Year Warranty on 14ga. 2 1/2" Framing

20 YEAR Limited Rust Through Warranty on:

- Panels for Vertical Roofs Up To Any Length
- Regular and Boxed Eaves Up To 31'
- Framing 12ga. 2 1/4"

Standard Heights 6'-16'

26 x 20 \$3,495	28 x 20 \$3,595	30 x 20 \$3,695
26 x 25 \$4,295	28 x 25 \$4,495	30 x 25 \$4,595
26 x 30 \$5,195	28 x 30 \$5,395	30 x 30 \$5,595
26 x 35 \$6,095	28 x 35 \$6,295	30 x 35 \$6,495
26 x 40 \$6,995	28 x 40 \$7,195	30 x 40 \$7,395
26 x 45 \$7,790	28 x 45 \$8,090	30 x 45 \$8,290
26 x 50 \$8,590	28 x 50 \$8,990	30 x 50 \$9,190

Standard Heights 6'-16'

26 x 20 \$2,995	28 x 20 \$3,095	30 x 20 \$3,395
26 x 25 \$3,695	28 x 25 \$3,895	30 x 25 \$4,195
26 x 30 \$4,495	28 x 30 \$4,695	30 x 30 \$4,995
26 x 35 \$5,195	28 x 35 \$5,495	30 x 35 \$5,895

Standard Heights 6'-16'

26 x 20 \$2,895	28 x 20 \$2,995	30 x 20 \$3,095
26 x 25 \$3,595	28 x 25 \$3,695	30 x 25 \$3,895
26 x 30 \$4,295	28 x 30 \$4,495	30 x 30 \$4,695
26 x 35 \$4,995	28 x 35 \$5,195	30 x 35 \$5,495

Buildings over 35 feet long must be vertical roof style.

LAND MUST BE LEVEL PRIOR TO THE INSTALLATION OF THE BUILDING!

Upgrade Available



Certified 12 Gauge
and 170mph Wind Load

PLEASE NOTE THAT THE COLORS MAY VARY DUE TO THE PRINTING PROCESS.



www.carolinacarports.com

American Built

OPTIONS, ACCESSORIES AND EXTRAS

OPTIONS	20' LONG	25' LONG	30' LONG	35' LONG	40' LONG
12G 170mph	\$410	\$530	\$650	\$770	\$890
J-Trim	60	70	85	95	110

SIDE HEIGHT

HEIGHT	20' LONG	25' LONG	30' LONG	35' LONG	40' LONG
7' Tall	\$110	\$130	\$155	\$180	\$205
8' Tall	215	265	310	360	410
9' Tall	325	395	470	540	610
10' Tall	430	530	625	720	815
11' Tall	540	660	780	900	1,020
12' Tall	840	995	1,140	1,295	1,440
13' Tall	1,190	1,370	1,775	1,955	2,245
14' Tall	1,295	1,500	1,930	2,135	2,450
**15' Tall	1,920	2,280	2,640	3,120	3,600
**16' Tall	2,160	2,520	2,880	3,360	3,840

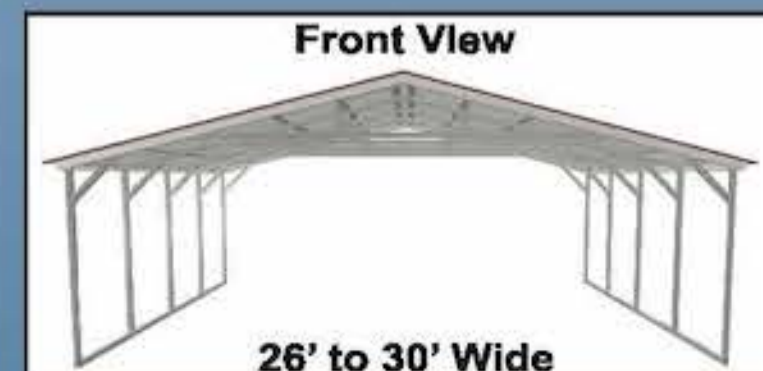
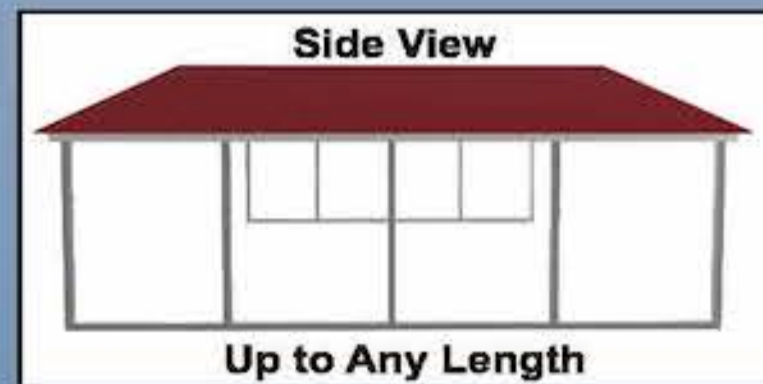
**Double Leg, Double Base Rail.

BOTH SIDES CLOSED

HEIGHT	20' LONG	25' LONG	30' LONG	35' LONG	40' LONG
6' Tall	\$440	\$520	\$620	\$700	\$860
7' Tall	550	650	775	875	1,075
8' - 9' Tall	660	780	930	1,050	1,290
10' Tall	770	910	1,085	1,225	1,505
11' - 12' Tall	880	1,040	1,240	1,400	1,720
13' Tall	990	1,170	1,395	1,575	1,935
14' - 15' Tall	1,100	1,300	1,550	1,750	2,150
16' Tall	1,210	1,430	1,705	1,925	2,365
VERTICAL SIDES (BOTH SIDES)	20' LONG	25' LONG	30' LONG	35' LONG	40' LONG
6' - 10' Tall Add	360	420	480	540	600
11' - 15' Tall Add	480	570	660	750	840
16' Tall Add	600	720	840	960	1,080
VERTICAL TWO TONE (BOTH SIDES)	300	350	400	450	500

EACH END CLOSED

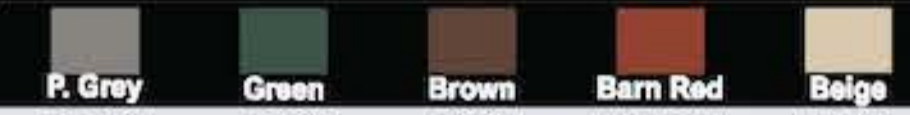
HEIGHT	26' WIDE	28' WIDE	30' WIDE
6' Tall	\$1,370	\$1,535	\$1,705
7' Tall	1,475	1,650	1,825
8' - 9' Tall	1,585	1,765	1,945
10' Tall	1,690	2,000	2,190
11' - 12' Tall	1,910	2,110	2,315
13' Tall	2,015	2,340	2,555
14' - 15' Tall	2,340	2,575	2,800
16' Tall	2,450	2,690	2,930
VERTICAL ENDS (PER END)	450	510	570
VERTICAL TWO TONE (PER END)	450	500	550



Certified	
\$750	6' X 6'
\$800	8' X 8'
\$850	9' X 8'
\$950	10' X 8'
\$1050	10' X 10'
*\$1900	12' X 12'
*\$2500	14' X 14'
*\$2700	16' X 16'

White Only

Certified	
\$850	6' X 6'
\$900	8' X 8'
\$950	9' X 8'
\$1050	10' X 8'
\$1150	10' X 10'
*\$2000	12' X 12'
Coming Soon	14' X 14'
	16' X 16'



Building must be 2' taller than the garage door when installed on the side.
*Chain Hoist Included In Price

Chain Hoist
\$325.00 Each

Side Openings
With Garage Door
6'-10' Wide \$150
12' Wide \$200
14' Wide \$250
16' Wide \$300

1/2 Panel w/ Trim
21' Long \$220
26' Long \$260
31' Long \$310
36' Long \$350

Frameouts
45° Angle \$85 (Plus Frameout Charge)
Garage Door \$150
Window \$75
Walk-In Door \$90

Side Openings
Without Garage Door
6'-10' Wide \$250
12' Wide \$300
14' Wide \$350
16' Wide \$400
18' Wide \$450
20' Wide \$500

Cut Panel
21' Long \$50
26' Long \$60
31' Long \$70
36' Long \$80

End Openings
Without Garage Door \$150

Panels 3'
21' Long \$110
26' Long \$130
31' Long \$155
36' Long \$175

Insulation
Double Bubble \$1.50/sqft
Woven R-17* \$3.00/sqft
<small>*CCI exclusive product</small>

Gable End
Certified \$300
Vertical Gable Add \$85

Windows
\$200 30" X 30"
\$225 30" X 36"

Walk-In Doors
36" X 80" \$300

High Wind Rated Available \$600
No Window Only

Colored Screws
Add 3% of Retail Cost of Building

Connection Fees
Side to Side 21' Long Start at \$100
Add \$25 For Each Additional 5' in Length

www.carolinacarports.com